



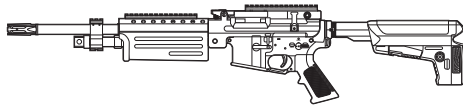
**KRYTAC®**

OWNER'S MANUAL

**TRIDENT**

LMG

Limited Edition



# TABLE OF CONTENTS

---

Safety Rules .....	2
Technical Specifications .....	4
Package Contents .....	4
Using the Magazine.....	5
Fire Selector Switch.....	6
Battery Installation.....	7
Hop-Up System .....	8
Clearing Jammed BBs.....	9
Disassembly .....	10
Assembly .....	12
Cleaning and Maintenance.....	13
Operating Under Harsh Conditions .....	15
Contact Information .....	15
Trouble Shooting Guide.....	16
Component Diagrams and Lists .....	17

# SAFETY RULES

---

Please read the entire KRYTAC manual before operating the airsoft gun. This manual covers important safety, operational, and maintenance topics. It is important that the user reads and understands the manual in order to safely handle and operate the airsoft gun. Failure to follow the safety guidelines and/or operational instructions in this manual may result in serious personal injury or damage to the airsoft gun.

## Safety Guidelines

---

### EYE PROTECTION

Always wear eye protection while shooting, operating, and maintaining your airsoft guns.

### FIREARM SAFETY RULES

**Always assume that the airsoft gun is loaded.** Never assume the chamber is empty based on memory or from someone else's word. An airsoft gun can still fire with the magazine removed.

### KEEP YOUR FINGER OFF THE TRIGGER

Remove your finger from the inside of the trigger guard until your sights are aligned on target and you are ready to fire.

### MUZZLE CONTROL

Always keep the muzzle of the airsoft gun pointed in a safe direction. Never point the airsoft gun towards anything you do not intend to shoot.

### KNOW YOUR TARGET AND ITS SURROUNDINGS (SAFETY DISTANCE)

Take note of objects in front of and beyond your target. Airsoft guns can shoot up to and beyond 150 feet and may travel further than intended without an adequate backstop. Never shoot an airsoft gun directly at targets such as rocks, glass, water, or other hard surfaces that may ricochet BBs in unpredictable directions.



**WARNING**

## SAFETY IS YOUR RESPONSIBILITY

---

The KRYTAC airsoft gun is designed and manufactured to KRYTAC's high standards. It was carefully inspected before it was packaged and shipped from our factory. It is the sole responsibility of the user for its safe use and handling. This airsoft gun is safe unless handled irresponsibly or misused.

### BEWARE OF BARREL OBSTRUCTIONS

Ensure that the barrel of your airsoft gun is free and clear of any obstructions prior to firing the airsoft gun. Failure to do so may cause a malfunction, and in some cases damage the airsoft gun.

### KEEP THE SAFETY ON

Keep the fire selector set to safe until your sights are aligned on target and you are ready to fire.

# SAFETY RULES

---

## FAILURE TO FIRE

If the airsoft gun fails to fire, misfires, or malfunctions, do not look into/down the barrel of the airsoft gun. BBs can jam in the chamber and can launch suddenly while under pressure causing serious injury.

## MAINTAIN YOUR AIRSOFT GUN PROPERLY

Maintaining your airsoft gun as outlined in the manual ensures that your airsoft gun will be safe to shoot and perform to its designed specifications. Alterations, modifications, or adjustments may damage your airsoft gun, making it unsafe to shoot and/or voiding all warranty claims.

## STORAGE AND TRANSPORT

Keep the fire selector on the airsoft gun set to safe, with the magazine and battery removed when storing your airsoft gun. Always store your airsoft gun in a safe place and out of the reach of children. When transporting your airsoft gun make sure that it is in a designated airsoft gun case. Never brandish your airsoft gun in public.



WARNING

**IT IS YOUR RESPONSIBILITY TO SAFELY STORE AND TRANSPORT YOUR AIRSOFT GUN.**

---

## ORANGE TIP

Any alteration of the coloration or markings required by state and/or federal law may be deemed illegal in a court of law. All risks and responsibility of any alteration to the product will be assumed by the operators, owners and/or user of the product.



WARNING

**THE ORANGE TIP DOES NOT DISTINGUISH YOUR AIRSOFT GUN AS A TOY, ALWAYS TREAT YOUR AIRSOFT GUN AS IF IT IS A REAL FIREARM.**

---

## HAZARDS OF BEING MISTAKEN FOR A REAL FIREARM

Due to the nature and design of some airsoft guns, they may be mistaken as a real firearm. It is strongly advised to operate an airsoft gun in the safety and privacy of your own home, or at a legally sanctioned location or game field. Police, Peace Officers, and Law Enforcement Officers are trained to treat objects that resemble a firearm as one. In the event that you are approached by a Law Enforcement Official, completely comply with their instructions. Never point an airsoft gun at a Law Enforcement Official. Confrontation with a Law Enforcement Official may result in serious injury or death.

## ALCOHOL, MEDICATIONS AND DRUGS

Do not handle or operate your airsoft gun while under the influence of alcohol, medication, or drugs that may impair judgment.

# SPECIFICATIONS

## TRIDENT LMG



Overall Length	855 mm (31.70") - 935 mm (36.80")
Overall Height	200 mm (7.87")
Weight	3.7 kg (8.2 lb)
Outer Barrel Length	14.5"
Inner Barrel Length	416 mm
Inner Barrel Diameter	6.05 mm



**CALIBER**  
6 MM



**VELOCITY**  
115+ MPS / 380+ FPS with 0.20g BB



**MECHBOX**  
Krytac Trident Mechbox  
with 8 mm Bearing



**ENERGY OUTPUT**  
1.3 Joules



**RATE OF FIRE**  
20+ RPS

### SPECIAL FEATURES

Easy spring change

Ambidextrous fire selector

Integrated FET system

Full metal upper and lower receiver

Adjustable rotary Hop-Up

KRYTAC battery stock

## PACKAGE CONTENTS

[1] Trident LMG Limited Edition airsoft gun  
[1] Box magazine

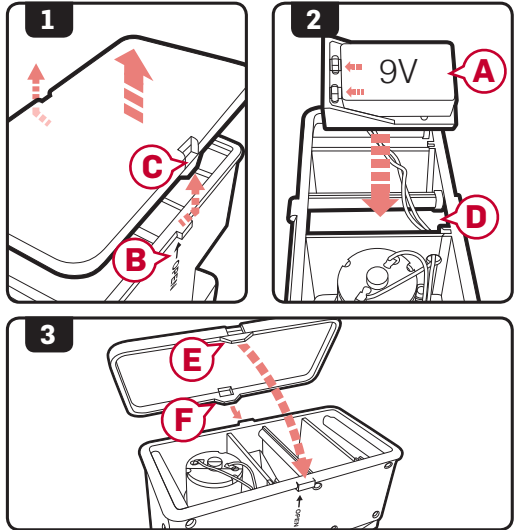
[1] User's manual  
[1] Cleaning rod

# USING THE BOX MAGAZINE

## Attaching Battery to the Box Magazine

**NOTE** The Krytac LMG Box Magazine operates from a single 9 volt battery (A). Install the battery prior to loading the box magazine with BBs.

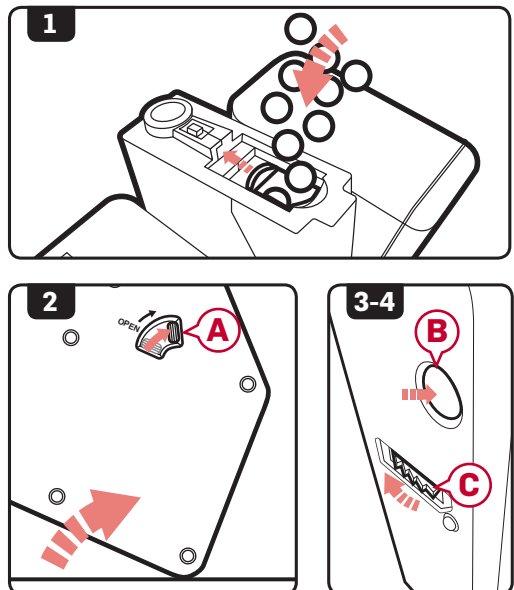
1. Follow the “Open” arrow (B) on the back to the locking tab (C) and lift the tab up and over to remove the panel.
2. Connect a single 9 volt battery and place into the battery cavity (D) in the magazine.
3. Replace the side panel by placing the front locking tab (E) on first then secure with the last locking tab (F).



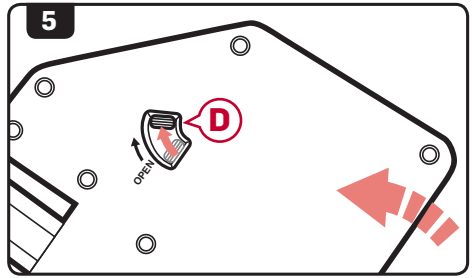
**DISCONNECT THE BATTERY WHEN THE MAGAZINE IS NOT IN USE**

## Loading the Box Magazine

1. Open the door on the top of the box magazine. Pour BBs into the opening until full.
2. Push up the reserve latch (A) on the back of the magazine and tilt. This will allow more loading space.
3. Press the loading button (B) at the bottom of the magazine until the magazine clicks. The magazine is now ready and loaded.
4. Between shooting, rewind the magazine spring (C) by pressing the button. This will ensure a ready magazine.



5. When the main reservoir is empty, turn the magazine sideways and open the reserve latch **D** to load more BBs.



**WARNING**

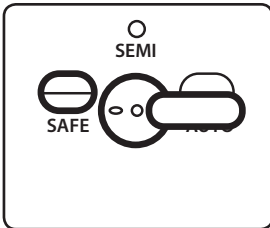
**ALWAYS UNLOAD  
MAGAZINE PRIOR  
TO STORAGE TO  
PRESERVE SPRING  
LIFE.**

## Troubleshooting: If no BBs are feeding from the box magazine

1. No noise from the box magazine motor.
  - a. Check to see that the battery is properly connected.
  - b. Check to ensure that the battery still has power. If not replace the battery.
2. Makes a noise but does not seem to feed.
  - a. Press the winding button on the bottom of the magazine again to add more tension to the follower.
  - b. Ensure that there are BB's in the main reservoir. If not, load more BB's into the main reservoir from the secondary reservoir or through the BB door.
  - c. The magazine may have an obstruction and will require servicing.

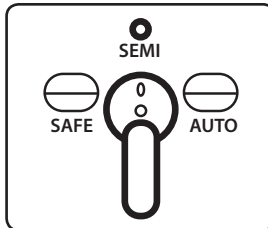
## FIRE SELECTOR SWITCH

### SAFE MODE



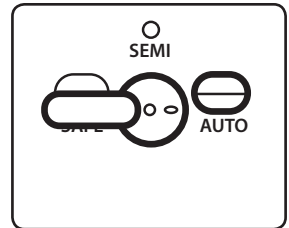
When in safe mode, the trigger will not engage and the airsoft gun will not fire.

### SEMI-AUTO MODE



While in semi-auto mode, the airsoft gun will only fire one shot for each time the trigger is engaged.

### FULL-AUTO MODE



In full-auto mode, the gun will continuously fire as long as the trigger remains engaged.

**SAFETY  
TIP**

It is advised when you are not ready to fire, keep the fire selector switch on the airsoft gun in the safe position.



**WARNING**

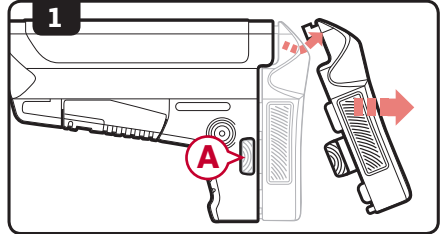
**DO NOT ENGAGE THE TRIGGER WHILE SWITCHING BETWEEN  
MODES ON THE FIRE SELECTOR.**

# BATTERY INSTALLATION

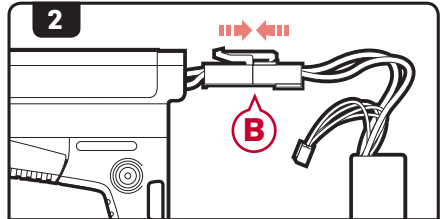


**ENSURE THAT THE STOCK IS IN THE FULLY COLLAPSED POSITION BEFORE OPENING THE STOCK COVER. DO NOT REMOVE THE STOCK COMPLETELY FROM THE GUN.**

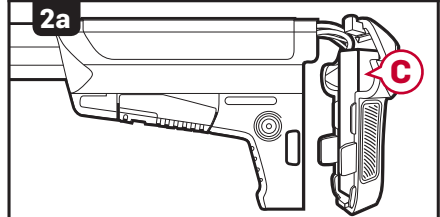
1. Set the fire selector to safe mode and depress the stock cover release button **(A)** on both sides of the stock to lift and remove the cover.



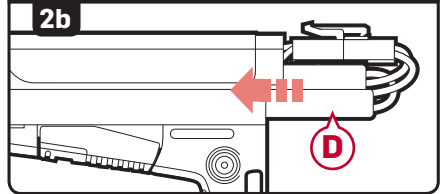
2. Connect either a nunchuck battery or small LiPo battery to the connector and place the battery into the stock. Push the connector plugs **(B)** together firmly until they lock into place.



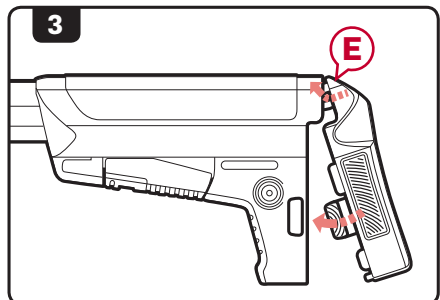
a. Place the small LiPo battery **(C)** so that it rests at the rear of the stock.



b. Place the nunchuck style batteries **(D)** down either side of the battery tubes found on the sides of the stock.



3. Replace the stock cover by first placing the tab **(E)** of the cover into the stock and then rocking the stock cover down into position. Ensure that the stock cover release buttons snap securely into place.



**WARNING**

**EXCESSIVE PULLING OR TUGGING OF THE BATTERY WIRES WHEN INSERTING OR REMOVING THE BATTERY CAN CAUSE THE FUSE HOUSING TO COME LOOSE OR DAMAGE TO THE GUN.**

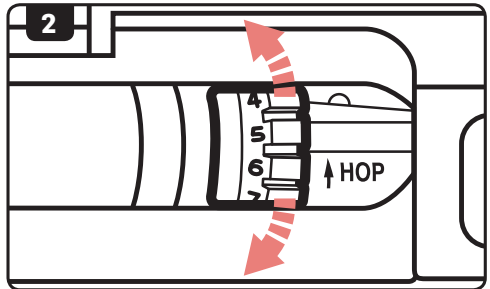
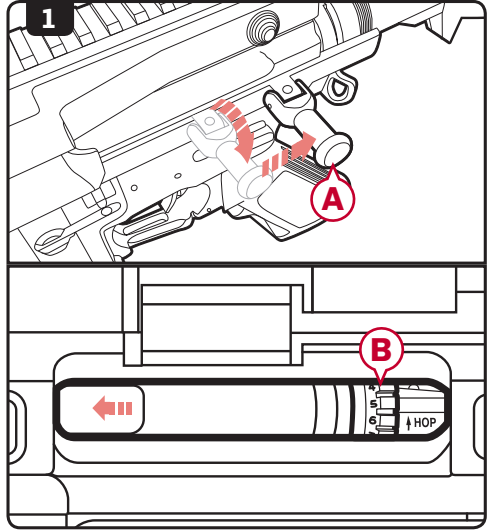


# HOP-UP SYSTEM

The advanced KRYTAC rotary Hop-Up unit is a standard feature in the Trident series AEGs. Proper adjustment of the Hop-Up will allow the AEGs to fire in a variety of shooting environments to obtain optimal BB trajectory.

## Hop-Up Adjustment

1. Pull the charging handle **A** downward then rearward. Hold charging handle in position to access the Hop-Up adjustment dial **B**.
2. Turn the dial up or down, an audible click will confirm each adjustment.
3. Increasing the number on the dial will increase the amount of Hop-Up on the BB. Decreasing the number will lower the amount of Hop-Up on the BB.



# HOP-UP SYSTEM

## Excessive Hop-Up

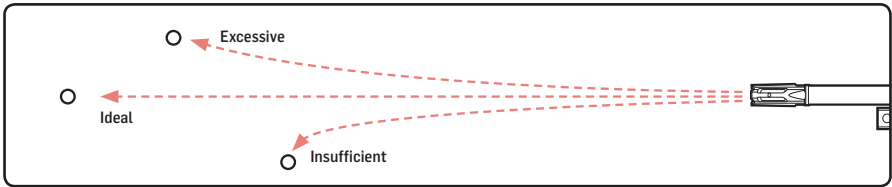
Airsoft BB travels in an extreme upward trajectory. Decrease the Hop-Up.

## Ideal Hop-Up

Airsoft BB travels in a long, horizontal flight path.

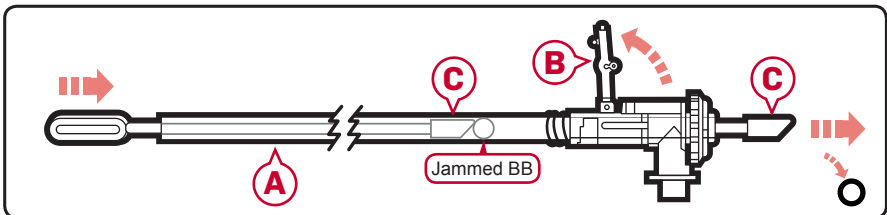
## Insufficient Hop-Up

Airsoft BB travels a short distance in a downward trajectory. Increase the Hop-Up.



# CLEARING JAMMED BBS

1. Disassemble the airsoft gun and remove the inner barrel assembly (A). (see pg11 for disassembly instruction).
2. Lift the Hop-up lever (B) from the inner barrel assembly (refer to step 3 of pg13).
3. Take the cleaning rod (C) and insert the unjamming side from the front of the barrel through to the rear to clear out the jammed BB.
4. Look through the barrel to ensure that it is cleared.
5. Reassemble the airsoft gun. (see pg12 for assembly instruction).



## NOTE

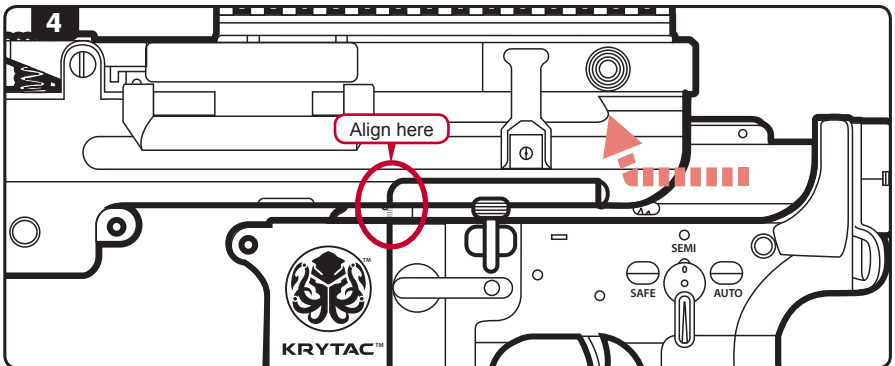
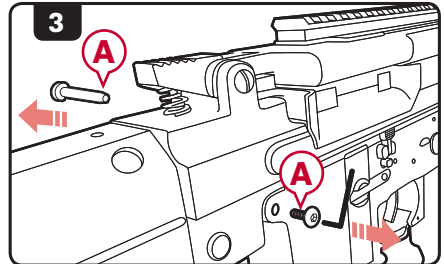
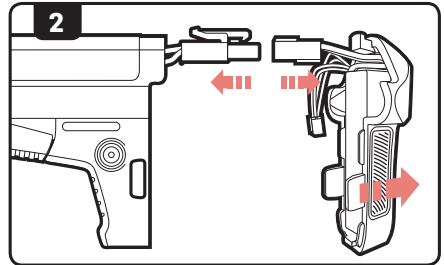
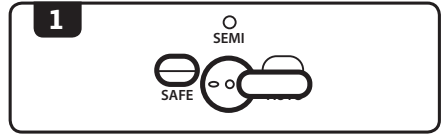
It is important to remember that all KRYTAC airsoft guns are made with high quality precision barrels, use only new, quality airsoft BBs. Never use recycled or low quality airsoft BBs, doing so may cause excessive jamming. In most cases, it can severely damage the internal gearbox and/or Hop-Up and inner barrel.

# DISASSEMBLY

**NOTE**

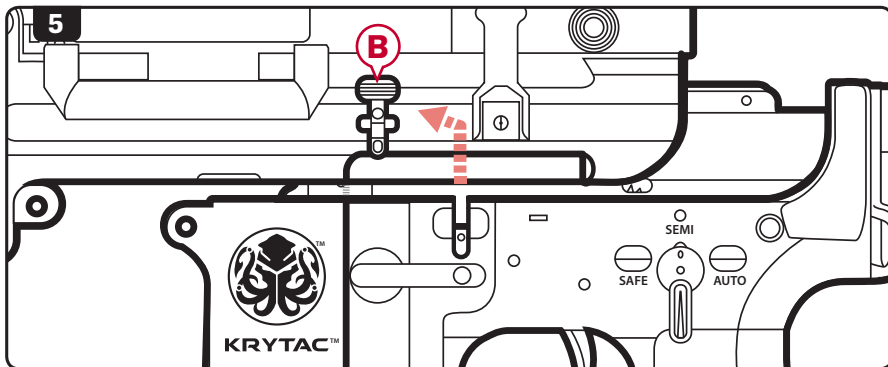
Before opening up the receiver, remove the magazine and fire the airsoft gun in a safe direction to ensure that the Hop-Up chamber is clear of any BBs.

1. Set the AEG to safe mode.
2. Remove the stock cover and disconnect the battery.
3. Remove **ONLY** the front pin **(A)** from the receiver.
4. Slide the upper receiver forward and away from the lower receiver slightly. Do not separate completely. Align the upper and lower receiver as shown.



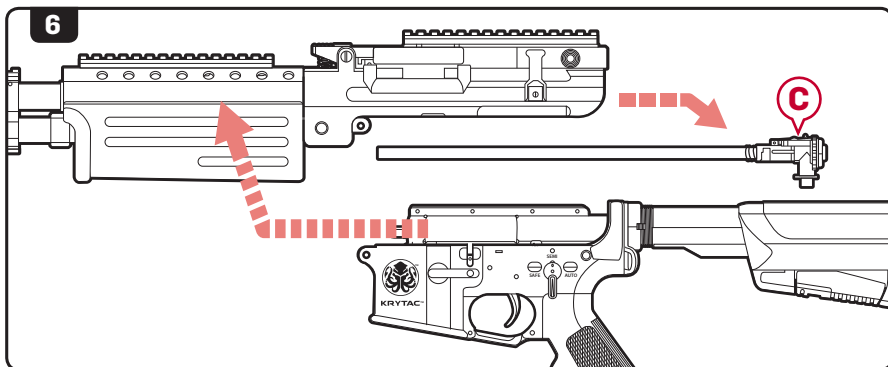
## DISASSEMBLY

5. Gently pull the bolt catch **(B)** upward and remove from the lower receiver.



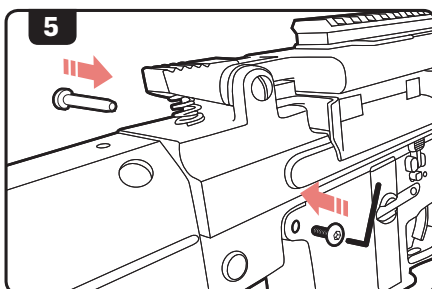
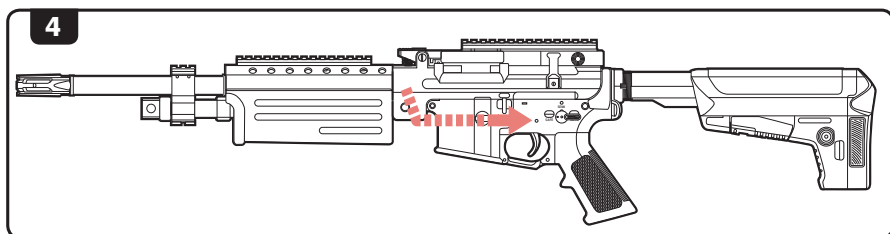
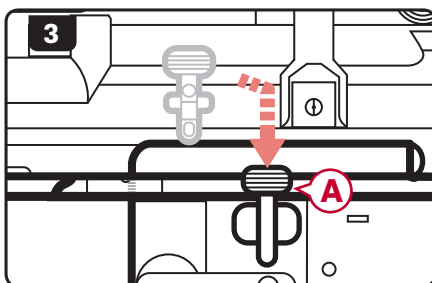
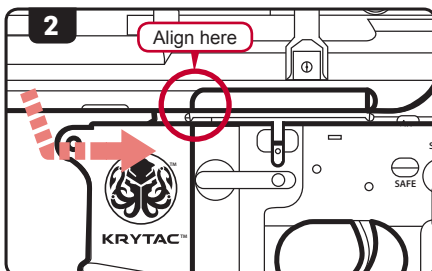
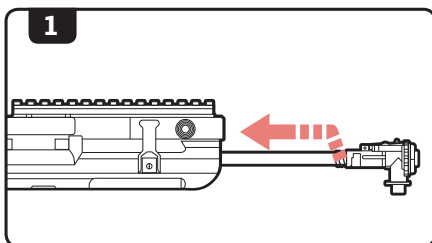
FAILURE TO REMOVE THE BOLT CATCH CAN RESULT IN A DAMAGED BOLT CATCH LEVER.

6. Completely separate the upper and lower receiver. Slide the Hop-Up and inner barrel assembly **(C)** out of the upper receiver.



# ASSEMBLY

1. Insert the Hop-Up and inner barrel assembly into the upper receiver.
2. Slide the upper receiver back onto the lower receiver. Stop when receivers are aligned as shown.
3. Insert bolt catch **A** into the lower receiver and press firmly into place.
4. Carefully slide the upper receiver fully onto the lower receiver.
5. Reinstall and secure the front body pin.

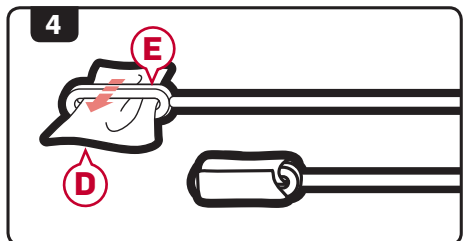
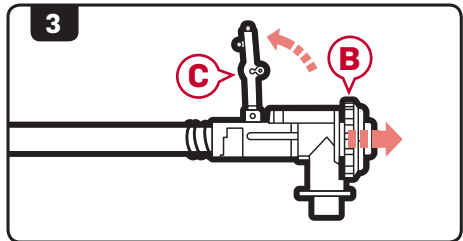
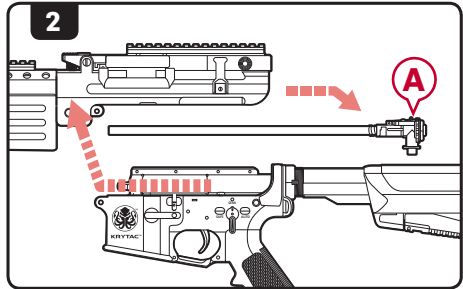
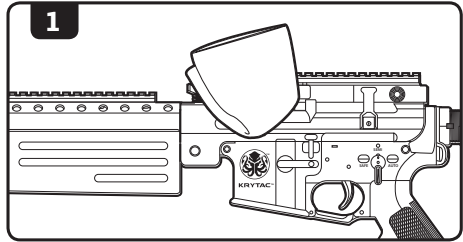


# CLEANING AND MAINTENANCE

## NOTE

WHILE POINTING THE AIRSOFT GUN IN A SAFE DIRECTION, REMOVE THE MAGAZINE AND CYCLE THE GEARBOX UNTIL NO BBS EXIT THE INNER BARREL. PLACE THE AIRSOFT GUN IN SAFE MODE AND DISCONNECT THE BATTERY PRIOR TO ANY CLEANING PROCEDURES.

1. Wipe down the external parts of the gun and remove any dirt and debris.
2. Disassemble the airsoft gun as described in the Disassembly section and pull out the barrel and Hop-Up assembly (A).
3. Pull back on the Hop-Up adjustment wheel (B) and lift the Hop-Up adjustment lever (C) up.
4. Take a lint-free cleaning patch (D) and place it through the looped end of the cleaning rod (E).

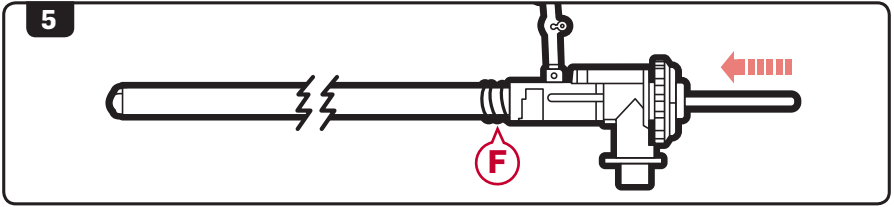


## WARNING

DO NOT ADD OIL TO THE HOP-UP BUCKING. EXCESSIVE OIL ON THE HOP-UP BUCKING MAY NEGATE THE HOP-UP, DECREASING RANGE AND ACCURACY.

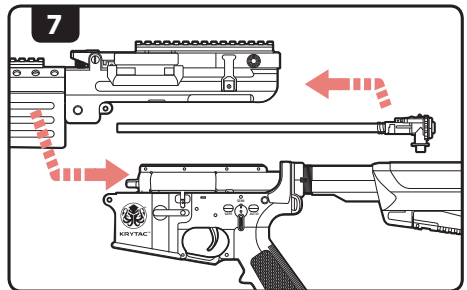
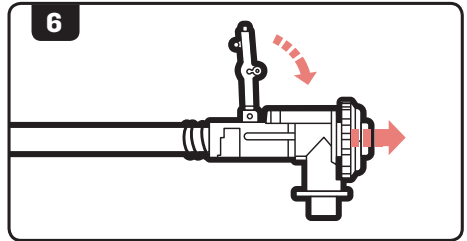
# CLEANING AND MAINTENANCE

5. Run the cleaning rod through the barrel from back to front (in the same direction that BBs travel).



**KEEP TRACK OF THE BARREL SPRING (F), IT CAN SEPARATE FROM THE BARREL ASSEMBLY.**

6. Pull back on the Hop-Up adjustment wheel and lower the Hop-Up adjustment lever back into position.
7. Reinsert the Hop-Up barrel assembly into the receiver and reassemble as described in the Assembly section.



## **OPERATING UNDER HARSH CONDITIONS**

---

When operating under harsh conditions, special maintenance may be required to match the climate conditions of a specific operational area.

### **Dust and Sand**

In harsh dusty or sandy environments, excessive debris can cause malfunctions and/or excessive wear on parts. Keep the gun covered and protected while not in use. When performing maintenance, use lubrication sparingly as it tends to attract dirt and other particles. After use in a dusty or sandy area, always field strip the gun, as outlined in the Disassembly section, cleaning all the areas that can be reached with a soft, clean, lint-free cloth.

### **Heavy Rain**

Never submerge or expose your gun to extremely wet environments. Exposure to such conditions may cause electrical failure and fluid to build-up inside the gearbox. Dry completely with a clean, lint-free cloth and clean inner barrel when necessary.

## **CONTACT INFORMATION**

---

For additional troubleshooting, information, or questions regarding KRYTAC customer service:

**Call M-F 07:30-16:30 Pacific Standard Time at: 1 855 KRISS US (574-7787)**

**Submit a contact form at: [www.krytac.com](http://www.krytac.com)**

**Email us at: [customerservice@krytac.com](mailto:customerservice@krytac.com)**



# TROUBLE SHOOTING GUIDE

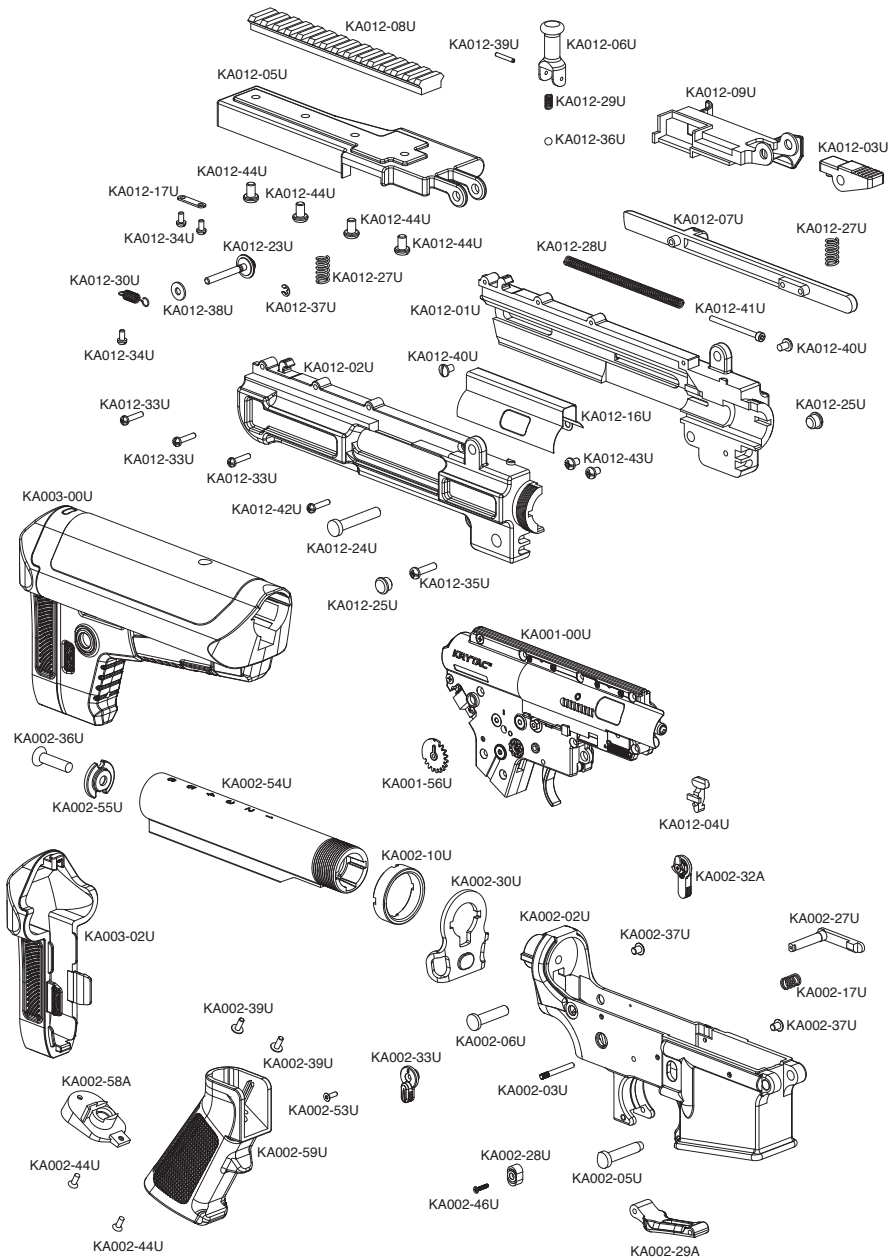


**WARNING**

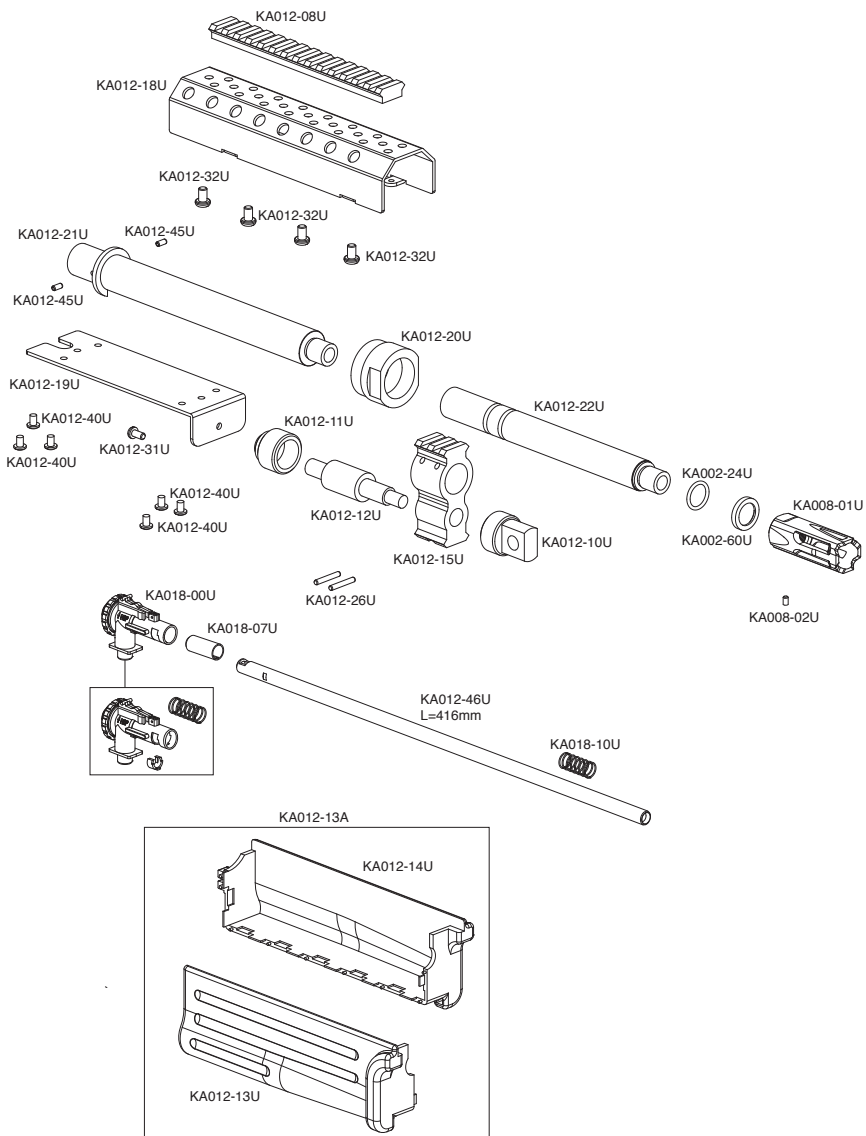
**WHEN TROUBLESHOOTING, FOLLOW THE SAFETY MEASURES DESCRIBED IN THIS MANUAL.**

<b>SYMPTOMS</b>	<b>CAUSE</b>	<b>SOLUTIONS</b>
Not firing/No sound	Safety is engaged	Change selector to Semi Auto or Full Automatic Mode
	Low power or dead battery	Charge and replace battery
	Blown out fuse	Replace with new fuse
	Loose connection	Contact customer service for professional care
Motor is running but not firing	Inspect magazine	Check if magazine is properly loaded into the gun Ensure magazine is loaded with ammunition Ensure the hi-cap magazine is properly wound
Motor or battery is hot after short use	Damaged battery	Inspect and/or replace battery
	Loose connection terminal	Contact customer service for professional care
Semi-Auto feature not functioning properly	Battery voltage or discharge is too high	Condition or replace battery
Semi-Auto feature not working at all	Disconnecter is not engaged properly	Reset the disconnecter by setting the selector to safe, then to automatic, then to semi
Firing cycle slowing down	Battery is low on power	Charge or replace battery
High pitch or grinding noise	Motor level is not adjusted properly	Contact customer service for professional care
BB travels upward	Hop-Up adjusted too high	Dial down the Hop-Up adjustment
BB travels downward	Hop-Up adjusted too low	Dial up the Hop-Up adjustment
BB double feeding or rolling out of the barrel	Excessive grease or oil in the hopup chamber	Fire at least 200 rounds to eliminate excessive grease from the chamber Clean Hop-Up unit with supplied cleaning rod
	Hop-Up unit is turned off	Turn Hop-Up unit on
Hop-Up unit can't be adjusted	Hop-Up adjustment arm is not set properly	Reset Hop-Up adjustment arm See page 13, sect. 6 for reassembly
Inner barrel is jammed or jamming	Use of recycled or low quality BBs	Use only KRYTAC branded or other high quality BBs
	Inner Barrel is contaminated with BBs or debris	Clear and/or clean inner barrel with supplied cleaning rod (See page 10 for clearing jam section and page 14 for cleaning and maintenance section)
Hi-Cap magazine not feeding	Magazine has not been wound	Wind wheel underneath magazine
	BBs are lodged inside the magazine	Shake or tap magazine to clear the jam
	Internal obstruction	Contact customer service for professional care

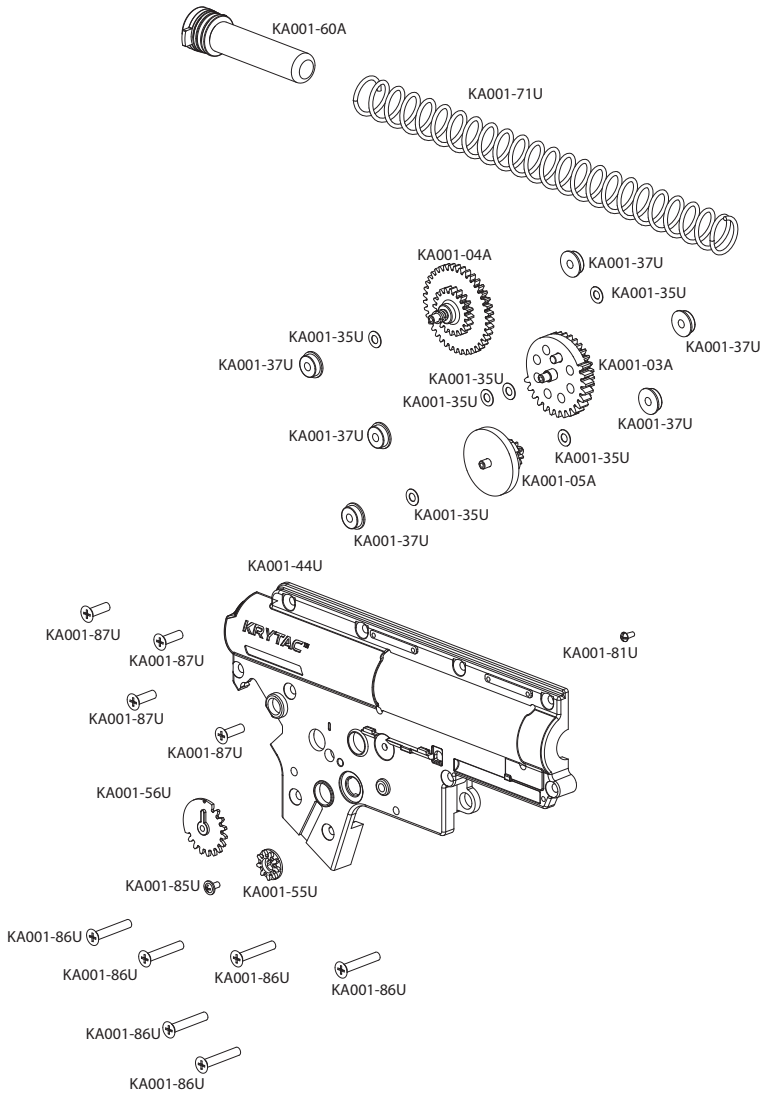
# COMPONENT DIAGRAM: LMG LIMITED EDITION



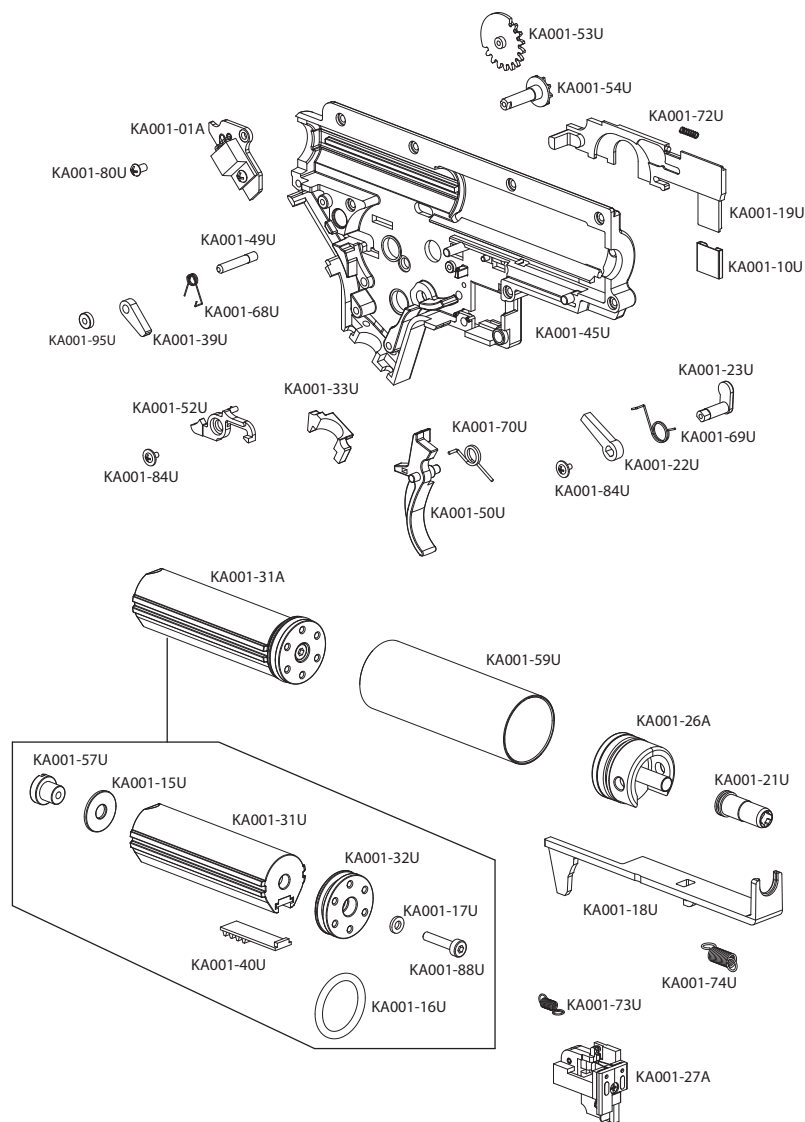
# COMPONENT DIAGRAM: LMG LIMITED EDITION



# COMPONENT DIAGRAM: LMG GEARBOX



# COMPONENT DIAGRAM: LMG GEARBOX



# COMPONENT LIST: LMG LIMITED EDITION

PART #	NAME		
		KA001-59U	CYLINDER
KA001-00U	GEARBOX	KA001-60A	SPRING GUIDE ASSEMBLY
KA001-01A	MOSFET ASSEMBLY	KA001-68U	ANTI-REVERSE LATCH SPRING
KA001-03A	SECTOR GEAR	KA001-69U	SAFETY BLOCK SPRING
KA001-04A	SPUR GEAR	KA001-70U	TRIGGER SPRING
KA001-05A	BEVEL GEAR	KA001-71U	MAIN SPRING
KA001-10U	CONTACT (SELECTOR)	KA001-72U	DISCONNECT SPRING
KA001-16U	PISTON HEAD O-RING	KA001-73U	SWITCH SPRING
KA001-17U	PISTON HEAD SHIM	KA001-74U	TAPPET PLATE SPRING
KA001-18U	TAPPET PLATE	KA001-84U	FLAT MICRO SCREW (2)
KA001-19U	SELECTOR PLATE	KA001-85U	SELECTOR TRANSFER GEAR SCREW
KA001-21U	AIR NOZZLE		
KA001-22U	SAFETY BLOCK	KA001-86U	GEARBOX SHELL SCREW (LONG)(6)
KA001-23U	SAFETY BLOCK LEVER		
KA001-26A	CYLINDER HEAD ASSEMBLY	KA001-87U	GEARBOX SHELL SCREW (SHORT)(4)
KA001-27A	SWITCH ASSEMBLY		
KA001-31A	PISTON ASSEMBLY	KA001-88U	PISTON HEAD SCREW
KA001-31U	PISTON BODY	KA001-95U	ANTI-RELEASE LATCH BUSHING
KA001-32U	PISTON HEAD		
KA001-33U	WIRING COVER	KA002-02U	LOWER RECEIVER
KA001-35U	SHIM (6)	KA002-03U	GEARBOX PIN
KA001-37U	BEARING	KA002-05U	FRONT RECEIVER PIN
KA001-39U	ANTI-REVERSE LATCH	KA002-06U	REAR RECEIVER PIN
KA001-40U	PISTON TOOTH RACK	KA002-10U	CASTLE NUT
KA001-44U	GEARBOX SHELL (RIGHT)	KA002-17U	MAGAZINE RELEASE SPRING
KA001-45U	GEARBOX SHELL (LEFT)	KA002-24U	CRUSH WASHER O-RING
KA001-49U	ANTI-REVERSE LATCH PIN	KA002-27U	MAGAZINE RELEASE
KA001-50U	TRIGGER	KA002-28U	MAGAZINE RELEASE BUTTON
KA001-52U	DISCONNECT LEVER	KA002-29A	TRIGGER GUARD ASSEMBLY
KA001-53U	SELECTOR GEAR (LEFT)	KA002-30U	SLING PLATE
KA001-54U	SELECTOR TRANSFER AXIS GEAR	KA002-32A	LEFT SELECTOR ASSEMBLY
		KA002-33U	RIGHT SELECTOR
KA001-55U	SELECTOR TRANSFER CAP GEAR	KA002-36U	BUFFER TUBE SCREW
		KA002-37U	RECEIVER PIN SCREW CAP (2)
KA001-56U	SELECTOR GEAR (RIGHT)	KA002-39U	PISTOL GRIP SCREW
KA001-57U	PISTON HEAD NUT	KA002-44U	MOTOR PLATE SCREW

# COMPONENT LIST: LMG LIMITED EDITION

KA002-46U	MAGAZINE RELEASE SCREW	KA012-25U	RECEIVER PANEL CROSSBOLT CAPS
KA002-53U	RIGHT SELECTOR SCREW	KA012-26U	GAS BLOCK PINS
KA002-54U	BUFFER TUBE	KA012-27U	LMG DUST COVER SPRING
KA002-55U	BUFFER TUBE SCREW CAP	KA012-28U	CHARGING SLIDE SPRING
KA002-58A	MOTOR PLATE ASSEMBLY	KA012-29U	CHARGING HANDLE SPRING
KA002-60U	CRUSH WASHER	KA012-30U	DUST COVER RELEASE SPRING
KA003-00U	STOCK ASSEMBLY	KA012-31U	HANDGUARD NUT SCREW
KA003-02U	BUTTPAD	KA012-32U	LMG SHROUD RAIL SCREW
KA008-01U	FLASH HIDER	KA012-33U	RECEIVER PANEL TOP SCREWS
KA008-02U	SET SCREW	KA012-34U	DUST COVER RELEASE SCREWS
KA012-01U	RECEIVER PANEL (LEFT)	KA012-35U	RECEIVER PANEL CROSSBOLT SCREW
KA012-02U	RECEIVER PANEL (RIGHT)	KA012-36U	CHARGING HANDLE DETENTE BALL
KA012-03U	MOCK RELEASE LEVER	KA012-37U	DUST COVER RELEASE CLIP
KA012-04U	LMG BOLT RELEASE	KA012-38U	DUST COVER RELEASE WASHER
KA012-05U	LMG DUST COVER	KA012-39U	CHARGING HANDLE PIN
KA012-06U	LMG CHARGING HANDLE	KA012-40U	BATTERY TRAY SCREWS
KA012-07U	CHARGING SLIDE	KA012-41U	CHARGING SPRING GUIDE
KA012-08U	LMG RAILS	KA012-42U	RECEIVER PANEL SHORT SCREW
KA012-09U	LMG FEED TRAY	KA012-43U	BOLT COVER SCREWS
KA012-10U	GAS NUT	KA012-44U	DUST COVER SCREWS
KA012-11U	HAND GUARD NUT	KA012-45U	BARREL INDEX SCREWS
KA012-12U	GAS ROD	KA012-46U	INNER BARREL (416 MM)
KA012-13U	HAND GUARD PANEL (RIGHT)	KA018-00U	HOP-UP ASSEMBLY
KA012-14U	HAND GUARD PANEL (LEFT)	KA018-07U	BUCKING
KA012-15U	GAS BLOCK	KA018-10U	TENSION SPRING
KA012-16U	MOCK BOLT COVER		
KA012-17U	DUST COVER RELEASE PLATE		
KA012-18U	HEAT SHROUD		
KA012-19U	BATTERY TRAY		
KA012-20U	LMG BARREL NUT		
KA012-21U	LMG OUTER BARREL		
KA012-22U	LMG OUTER BARREL EXTENSION (LONG)		
KA012-23U	DUST COVER RELEASE		
KA012-24U	LMG DUST COVER PIN		

[www.krytac.com](http://www.krytac.com)

© Copyright 2014 KRISS USA  
Subject to change

R.2014.12.05